

## COMPACT RAMAN PROBE

Patent pending optical design enables independent configuration of emission and collection channels to optimize measurement by considering both the sample (solid or liquid) and the system (spectrograph and camera) used.



### FEATURES

- Configured to match spectrograph/camera system
- High collection efficiency (f/2) optics
- Internal filtering
- Configurable collection bundle output (bundle or slit)
- Rugged assembly with no moving parts

### SPECIFICATIONS

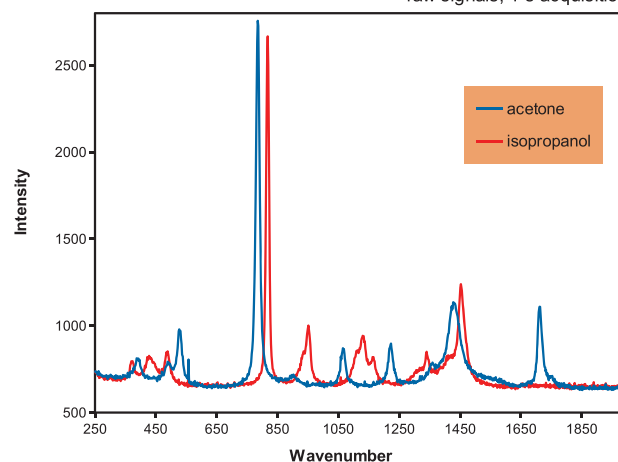
- Excitation wavelength: 785 nm
- Overall length: 2 meters
- Laser blocking: better than OD6
- Minimum Raman shift: 250  $\text{cm}^{-1}$
- Output format: linear array
- Connectors: emission - FC;  
collection - SMA or ferrule

Model	FRP785S038	FRP785S127
Diameter	3.8 mm	12.7 mm
Rigid probe tip length	40 mm	80 mm
Working distance	4.3 mm	17.3 mm
Depth of field	+/-2 mm	+/-6 mm
Excitation fiber	100 $\mu\text{m}$ core	100 $\mu\text{m}$ core
Collection bundle	19 x 100 $\mu\text{m}$	19 x 100 $\mu\text{m}$

### OPTIONS

- Excitation wavelength: 532, 830, 1064 nm
- Fiber diameter: 50, 100  $\mu\text{m}$  core
- Working distance: 0 to 50 mm
- Reference channel for calibration

Acetone and Isopropanol Raman Spectra Comparison  
raw signals, 1 s acquisition



Painkiller Tablet Raman Spectra Comparison  
raw signals, 1 s acquisition

